

Walplast®

BUILDWELL

READY-MIX PLASTER

MILAYE
SIRF PAANI
LAGAYE BINA
PARESHAANI™

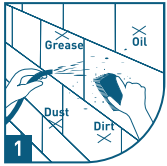


40 Kg Bag | PACKAGING

Highlights

- ✓ Compact Plaster, Reduce Void Gaps
- ✓ Negligible Silt Content
- ✓ Smooth Plastering
- ✓ Polymers Already Added To Enhance Overall Durability

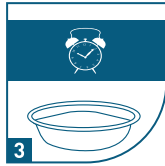
HOW TO APPLY



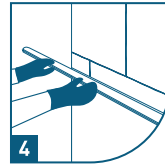
The substrate needs to be cleaned and made free from grease and loose particles. Then dampen the surface with clean water.



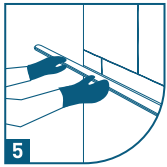
Add Ready Mix Plaster to potable water & mix well for 5-10 mins. (Recommended mix 15-17% water)



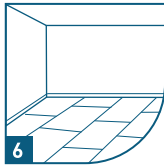
Allow Mixture to stand for 5 mins. & then remix again for 2 mins.



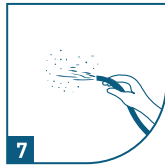
Apply plaster to the substrate, using some pressure while finishing with a steel trowel or wooden float to ensure optimum bonding.



Apply aluminum level patty from bottom to top direction followed by left to right & right to left direction to level the plaster.



Plain plaster wall, ready for wall putty application.



Post 24 hours curing is recommended for 7 days.

TECHNICAL INFORMATION

TEST	TEST METHOD	SPECIFICATION	RESULTS
Water Demand	IS:4031(Part-4)1988	15-25%	16
Pot Life	Internal	>90 Minutes	130
Setting Time: Initial	IS:4031 (part-5) :1988	>30 min	200
Setting Time: Final		<=600 min	210

COVERAGE

BuildWell Ready-Mix Plaster's approx coverage per 40 kg bag is as under:

- 10-12 mm plaster on light weight blocks is 17-18 sq. ft.
- 10-12 mm on brick wall 14-15 sq. ft.
- 18 mm on light weight blocks is 11 sq. ft.
- 25 mm on brick wall 7-7.5 sq. ft.
- 10 mm on RCC 20-22 sq. ft.
- Coverages depend on quality and nature of substrates hence is indication.
- Plaster >More than 10-12 mm thickness must be in 2 coats.

KEY FEATURES

- Reduces rebounding loss
- Highly durable plaster
- Cuts repair & maintenance cost
- Time-saving
- Cost-effective
- Excellent work ability
- Pre-mixed, only water to be added
- RMP can be used for interior as well as exterior walls

RMP

STORAGE



Walplast Products Pvt. Ltd. ISO 9001 : 2015 Certified Company

Corporate Office: Rainbow Building, Plot No. 13, Sector - 24, Mumbai Pune Highway Service Road, Turbhe, Navi Mumbai - 400 705, Maharashtra, India. Tel no.: 022-41418282. Enquiry No.: 1800 3000 6650

Email: sales@walplast.com, customercare@walplast.com / For more details visit us at: www.walplast.com

Disclaimer: The product information and application details given by the company and its agents has been provided in good faith and meant to serve only as a general guideline during usage. Users are advised to carry out test and take trials to ensure on the suitable of the products meeting their requirement prior to the full scale usage of our products. Since the correct identification of the problems, quality or other materials used and the on-site workmanship are factors beyond our control, there are no guarantee/warranty as to the result obtained. The company does not assure any liability for unsatisfactory results arising from the use of our products.